

Guitar Neck Truss Rod Adjustment Setup



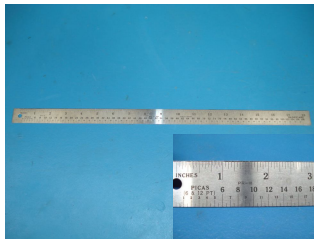
Rev A
11/12/2008

CARVIN
carvinservice.com

Tools needed:



Feeler gage



Straight Edge 18"

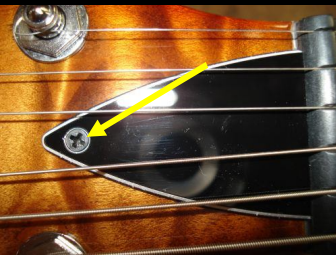


Small Phillips Screw Driver



Allen Wrench 4mm

Cover removal



Cover must be removed to see neck rod.

Cover Removal



Remove screw.



Neck Adjustment

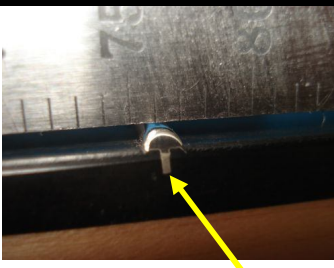


Adjust the Truss Rod using an Allen Wrench. Turning the nut to the left (counter-clockwise) will reduce the amount of forward bow.



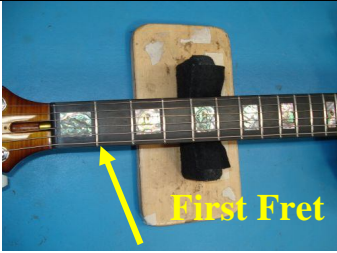
Turn the nut 1/10 of a turn and recheck.
4mm Allen wrench provided with guitar.

What is a fret?



Check for clearance at the 7th fret, yellow arrow points to a fret.

First Fret



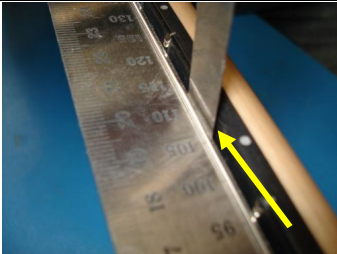
Check clearance on 7th (seventh) Fret.

Bowed Truss Rod



Truss Rod is bowed. Note how the filler gauge is not flat to the straightedge.

Perfect Truss Rod



The optimum forward bow is .010" note how the feeler is flat to straightedge.

Use .010" feeler gage.

Cover



Re-install cover and re-tune your guitar and you are ready to go!

Fine-tuning tip:



Never rest your hand on the Bridge while fine-tuning.

Comments or questions email us at carvinservice@carvin.com