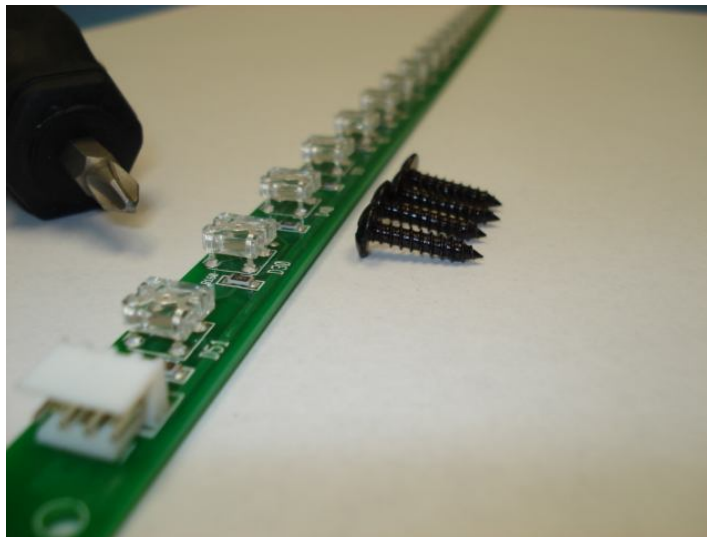


V3 LED KIT Installation



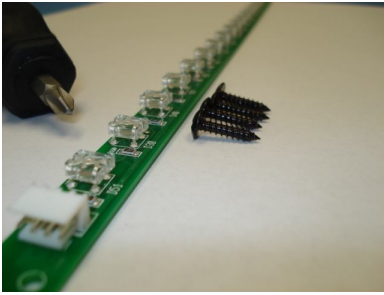
8 28 09

Rev B

CARVIN

Carvinservice.com

Parts needed



V3 LED KIT:
4 Screws
1 Phillips screw driver
LED strip

Important: In order to install this LED kit your V3 must have been made after July 22 2009

STEP 1 Remove back cover



The first thing you have to do is remove the back cover of the V3, to remove the V3 from the wood enclosure. There is not enough room in there to do the install with out removing the amp. See alternate installation options in picture bellow.

Important: Use heavy duty gloves when working on the amp, to protect your hands, there may be sharp edges.

ALTERNATE INSTALLATION PROCEDURE

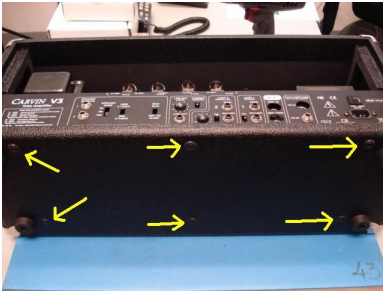


It is also possible to install the V3 LED KIT through the front of the amp by removing the 5 screws in the front, and removing the front grill. The installation is easier this way. A Small Screw Driver is included in the kit if you decide to install the KIT this way.

The following installation procedure is different to show where and how to install the LED board, it's hard to explain because you can't see inside the cabinet if I would have done it this way. Not enough room to take the pictures.

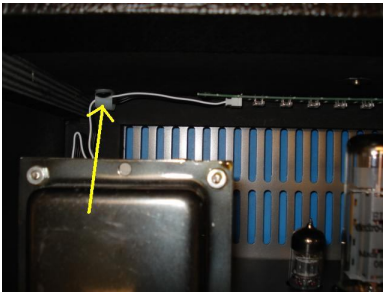
If you want to continue Installing the KIT by removing the amp go to Step 2, it's your choice.

STEP 2 Remove V3 Amp screws



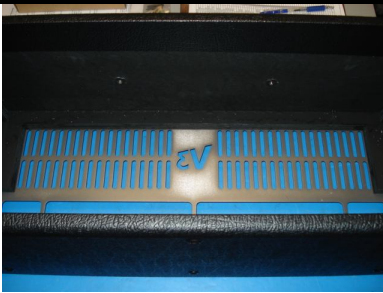
There are 6 screws holding the V3 to the Wood enclosure. Remove them.

STEP 3 Screw removals



Remove this one screw, then you can completely remove the amp. Removing the amp from the wood enclosure makes it easier to install the LEDs.

STEP 4 V3 Removed



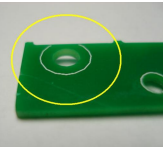
Remove amp. Because the amp is heavy, its best if you have a friend help you.

Important: Be careful with the tubes, make sure they don't break, not only will they not work, but you can potentially cut your hands, if you are not careful.

STEP 5 LED Installations

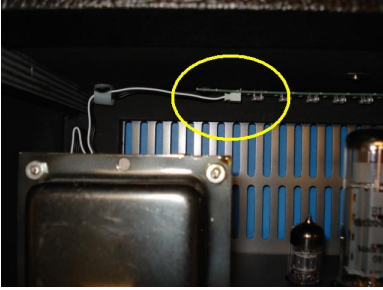


At this point you will need the LED strip. Start installing it with the screws and screw driver provided.



Note: Only install the screws where there is a white circle, see picture to the left. 3 Screws only. If you see the board flex a bit that is okay.

STEP 6 Connect LED strip



Put back the amp, and connect cable. Don't forget to install the cable clamp and the one screw holding it.

STEP 7 Put cover back



Put back the back cover and you are done.

The LEDs change to 7 different colors. For instructions (PDF) on how to do this go to: CarvinService.com under the Troubleshooting Tab, FAQ finder type: V3