

# How to: Check if the battery is being charged in the S400, S400D w/ tech troubleshooting



Rev A  
8/1/2008

**CARVIN**  
carvinservice.com



Only a certified Technician should work on any amplifier. This procedure is dangerous and you can get hurt please.

### STEP 1



You will need a drill.

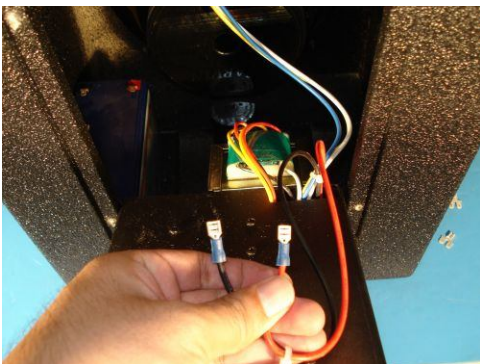
### STEP 2



Remove the four screws as indicated in picture.

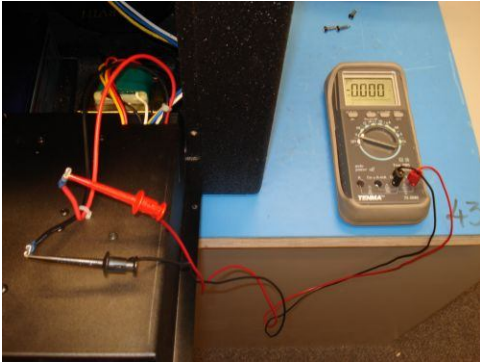


### STEP 3



Disconnect the 2 wires that go to the battery terminal.

STEP 4



Connect:  
Red to Red  
Black to Black.

Meter:  
Black to Common or Ground (COM)  
Red to Volts or (V)

STEP 4



A)

When you turn the Power ON your meter should read, under normal conditions, 17V DC. –AC cord plugged in.

Picture A indicates a good reading.

If you measure 17V roughly, that means that the battery is being charged. Leave it charging over night for a full charge.

Connect the two terminals to the battery and power the S400 ON with an AC cord, if you have no power it means you have a dead battery or a BAD battery. It's rare for a battery to go bad but it does happen.

For a replacement battery call (800)854-2235 ask to speak to sales. Extension: 506

## TECH TROUBLESHOOTING:

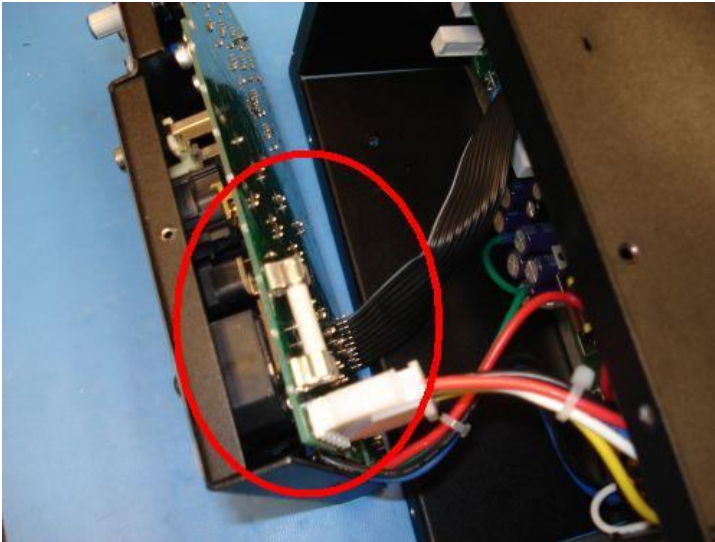
---



You could also measure 0VDC with the power ON.  
-AC cord plugged in-

If this occurs that means that the S400 is not charging the battery.

There is a voltage regulator that can be replaced. The battery has its own fuse as well, "See Picture below". The Voltage regulator is Q1 in the schematic. Check the fuse before replacing the regulator. For the schematic click on "schematics" in the search box type S400.



If you need to replacement the fuse,  
The fuse Value is: 15A 250V  
Note: Remove all 6 screws to open the electronics box. Slide the front out.



NOTE: If you want to measure the battery's voltage outside of the unit, the battery must be "loaded" in order to measure its true voltage, if you measure across the two terminals (with out a load) you will measure a surface voltage.

EXPORT (230-240VAC 50Hz): Follow the same instructions.  
Comments or questions email us at [Carvinservice@carvin.com](mailto:Carvinservice@carvin.com)