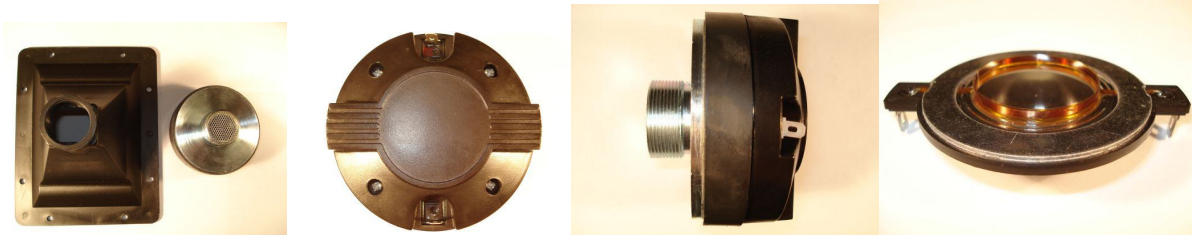


**How to:
Replace the Diaphragm
From a HT151-16
+
Tech Troubleshooting**

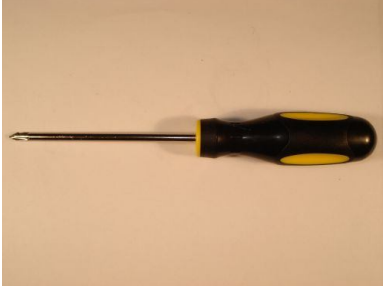


**Rev A
10/14/2008**

CARVIN
carvinservice.com

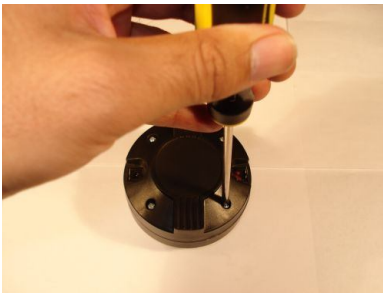


When removing the Driver from the speaker cabinet, make sure to turn off the amplifier. Don't work on the speaker while it's playing. You could get hurt! You could damage your amplifier and or speakers too.



You will need a Phillips Screw Driver

STEP 1



Start by removing the back cover from the HF Driver.

HT151-16

STEP 2



Remove the Diaphragm.

STEP 3



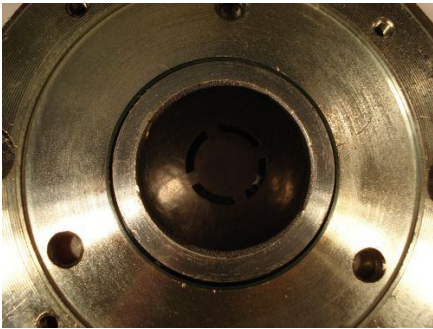
Before installing Diaphragm remove the cardboard protector it comes with.

STEP 3A



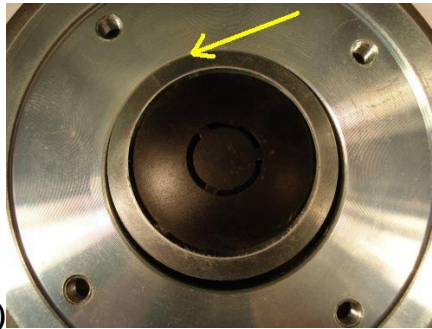
Install the new Diaphragm. The new Diaphragm should drop right in. After removing the old Diaphragm, clear or remove anything that might be floating around. You are looking for sand dust, metal, plastic, it should be clean in and around.

Tech Troubleshooting:



A)

GOOD



B)

BAD.

Note how in picture B, the middle part is touching the wall, it's off to the side, when this happens you will not be able to remove or replace the diaphragm. Only other option is to replace the whole driver.

STEP 4



Line up the holes before putting on the screws.



STEP 5



Screw the Driver into the Horn before installing it back in the cabinet.

Comments or questions email us at carvinservice@carvin.com